



PC Programmer for Hitec Transmitters & Receivers



1. About HPP-22

Congratulations! Welcome to the next generation of Hitec RC. We greatly appreciate your purchase of the HPP-22. The HPP-22 will enable you to connect your Hitec radio equipment to your PC, allow you to upgrade the firmware in selected Hitec radios and receivers, adjust a settings, and even download telemetry data collected from the plane using the optional Hitec sensor station and sensors.

2. Specs

Product Name : HPP-22
 Compatible OS : Windows® XP and Windows VISTA™.
 Connection : USB A to Mini B 5-Pin 2.0 Cable

Features:

- USB Interfaced (No Additional Battery Required)
- Easy Operation with PC Program (Program Available on the Website)
- PC Interface for Hitec 2.4GHz Telemetry Monitoring System (with Sensor Station & Optional Sensors)

Functions:

- Radio, Module, and Receiver Firmware Upgrade
- Radio, Module and Receiver Data Setting
- Data Save & Load to PC
- Date Reset
- Auto Version Check
- Plug and Play

3. Detailed Items in Box & Connecting Method

A. HPP-22, Receiver Cable (2Set), Radio Cable (1set), Manual.



B. USB A to Mini B 5-Pin Cable* required to connect to PC (Not included.)



Tip We recommend to use maximum of 3-feet in cable length.

C. Please visit www.hitecrd.com to download a HPP-22 PC Program.

Connecting Method



Run PC Program first, then connect HPP-22 with PC using a USB Cable.



HPP-22 Driver installation starts automatically.

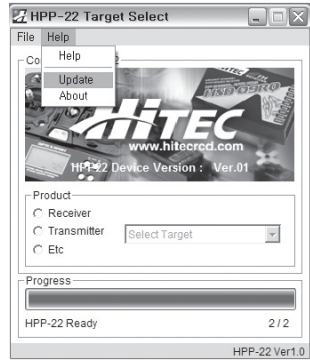


Plug-in the appropriate cable to a the product you want to communicate with.

Tip Please read a individual product's instruction for connecting methods



Connect the plug to a product you want to upgrade a firmware or to adjust a set up.



For your HPP-22 update, click Help, then click Update to check if there is any update available.

4. Warnings

- Warnings for HPP-22 connecting process:**
- * Do not connect more than one HPP-22 with a PC
 - * Do not connect Battery or Servo to HPP-22
 - * Do not connect more than one product
 - * Do not disconnect the cable with a PC and a product during programming or setup.

- Tip**
- * Select the right product from the menu then connect a cable.
 - * Check if the cable is properly connected
 - * Cable length is recommended to be in 3-feet or shorter

- Warnings for HPP-22 PC Program**
- * Do not run any other program during load and save process with Microsoft EXCEL®
 - * Please run HPP-22 PC Program once. *Multiple attempts could freeze the program
 - * When error occurs, shut down the program and disconnect the cable first. Then restart the process

- Tip**
- * Please re-connect the cable when "HPP-22 Device Reconnecting" message pop-up
 - * HPP-22 PC Program is compatible with Windows® XP and Windows VISTA™.